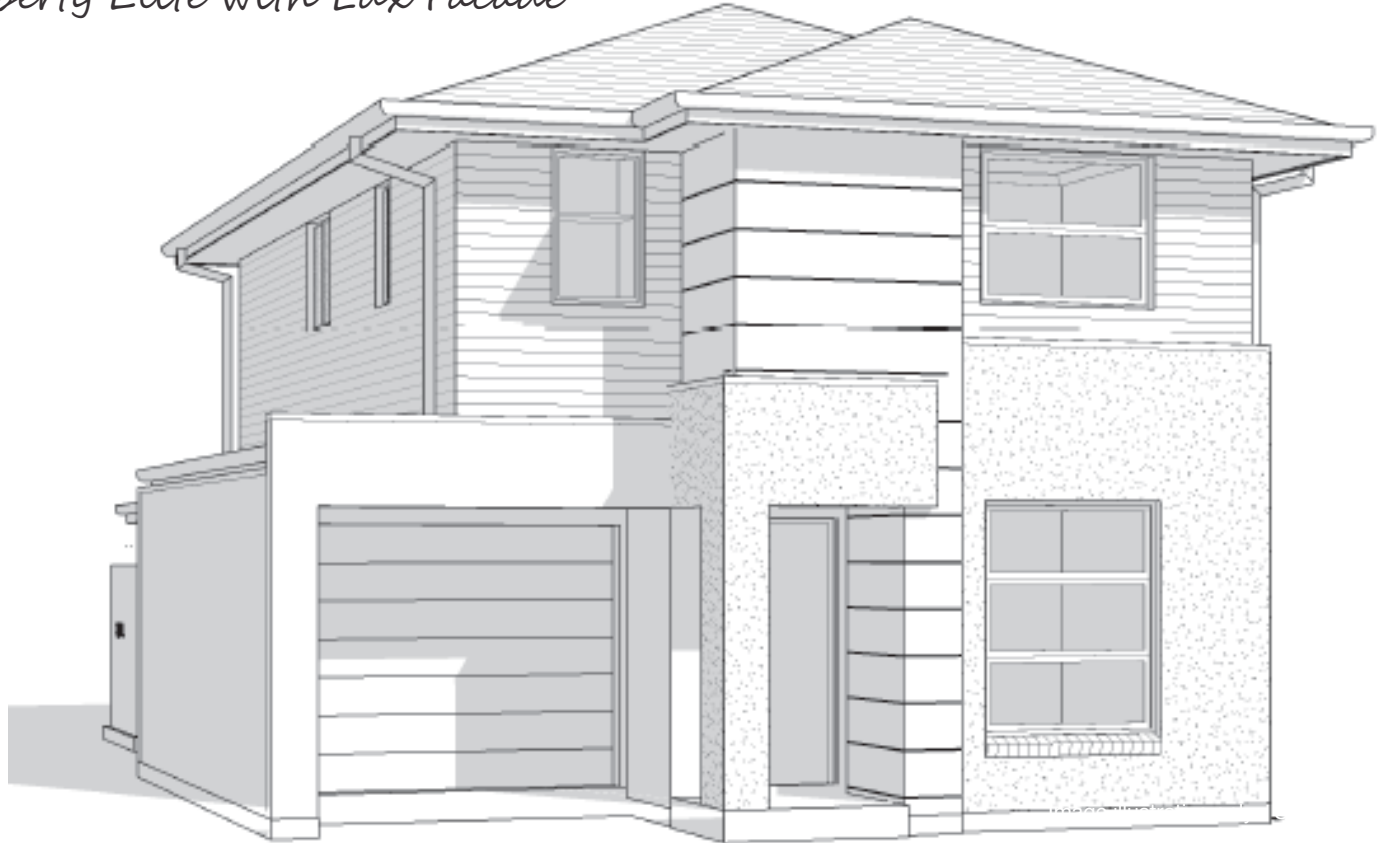


Liberty Elite with Lux Facade



Inclusions*

- Site costs
- Council/CDC requirements
- Basix costs
- Concrete driveway & path to front entry
- Kikuyu turf & underlay to front yard
- Tiled alfresco area
- Tiles to all downstairs living areas
- Carpet to all bedrooms & upstairs living areas
- Stone kitchen benchtop
- Ducted air conditioning
- Remote control garage door
- 900mm appliances
- Treated frame
- Fly screens to windows
- Anticipated registration date - June 2018

House 207.70m²
Land 300m²

Contact
Dino Novak
0407 313 998

