

Harvey Elite with Vibe Facade



Image illustrative only - See conditions below

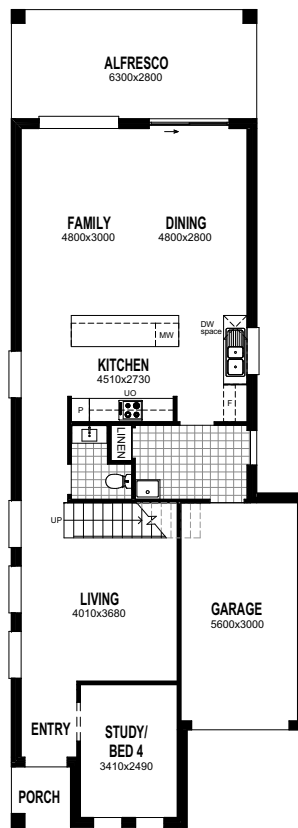
Inclusions*

- Site costs
- Council requirements
- Basix costs
- Concrete driveway & path to front entry
- Tiles to all downstairs living areas
- Carpet to all bedrooms & upstairs living areas
- Stone kitchen benchtop and vanities
- Ducted air conditioning
- Remote control garage door
- 900mm appliances
- Treated frame
- Tiled concrete alfresco
- Fly screens to windows
- Keyless front entry door lock
- Downlights to all living areas
- 2600mm high ceilings to ground floor
- Anticipated registration - July 2018

House 213.32m²
Land 313m²

Contact
Joe Joseph
0411 615 859

Ground Floor



First Floor

