

### Argyle Elite with Eden Facade



Image illustrative only - See conditions below

#### Inclusions\*

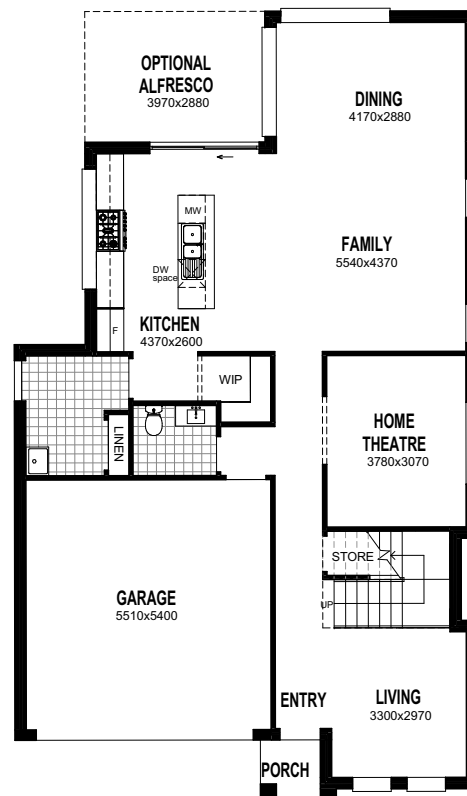
- Site costs
- Council/CDC Requirements
- Basic costs
- Concrete driveway & path to front entry
- Tiled alfresco area
- Fly screens to windows
- Tiles to all downstairs living areas
- Carpet to all bedrooms and upstairs living areas
- Stone kitchen bench top and vanities
- Ducted air-conditioning
- Remote control garage door
- 900mm appliances
- Treated Frame
- Keyless front entry door lock
- Downlights to all living areas
- 2600mm high ceilings to ground floor
- Registered

**House 269.37m<sup>2</sup>**  
**Land 404m<sup>2</sup>**

**Contact**  
**Joe Joseph**  
0411 615 859



Ground Floor



First Floor

