

Hayman Elite with Lux Facade



Image illustrative only - See conditions below

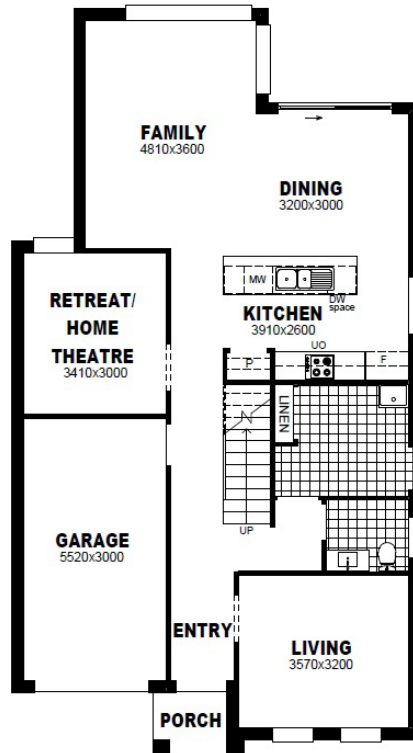
Inclusions*

- Site costs
- Council requirements/CDC requirements
- Basix costs
- Concrete driveway & path to front entry
- Tiled alfresco area
- Fly screens to windows
- Tiles to all downstairs living areas
- Carpet to all bedrooms & upstairs living areas
- Stone kitchen bench top
- Ducted air-conditioning
- Remote control garage door
- 900mm appliances
- Treated frame
- Downlights to all living areas
- 2600mm high ceilings to ground floor
- Keyless front entry door lock
- Registered

House 213.05m²
Land 407m²

Contact
Carmen Pearce
8778 91163

GROUND FLOOR



FIRST FLOOR

